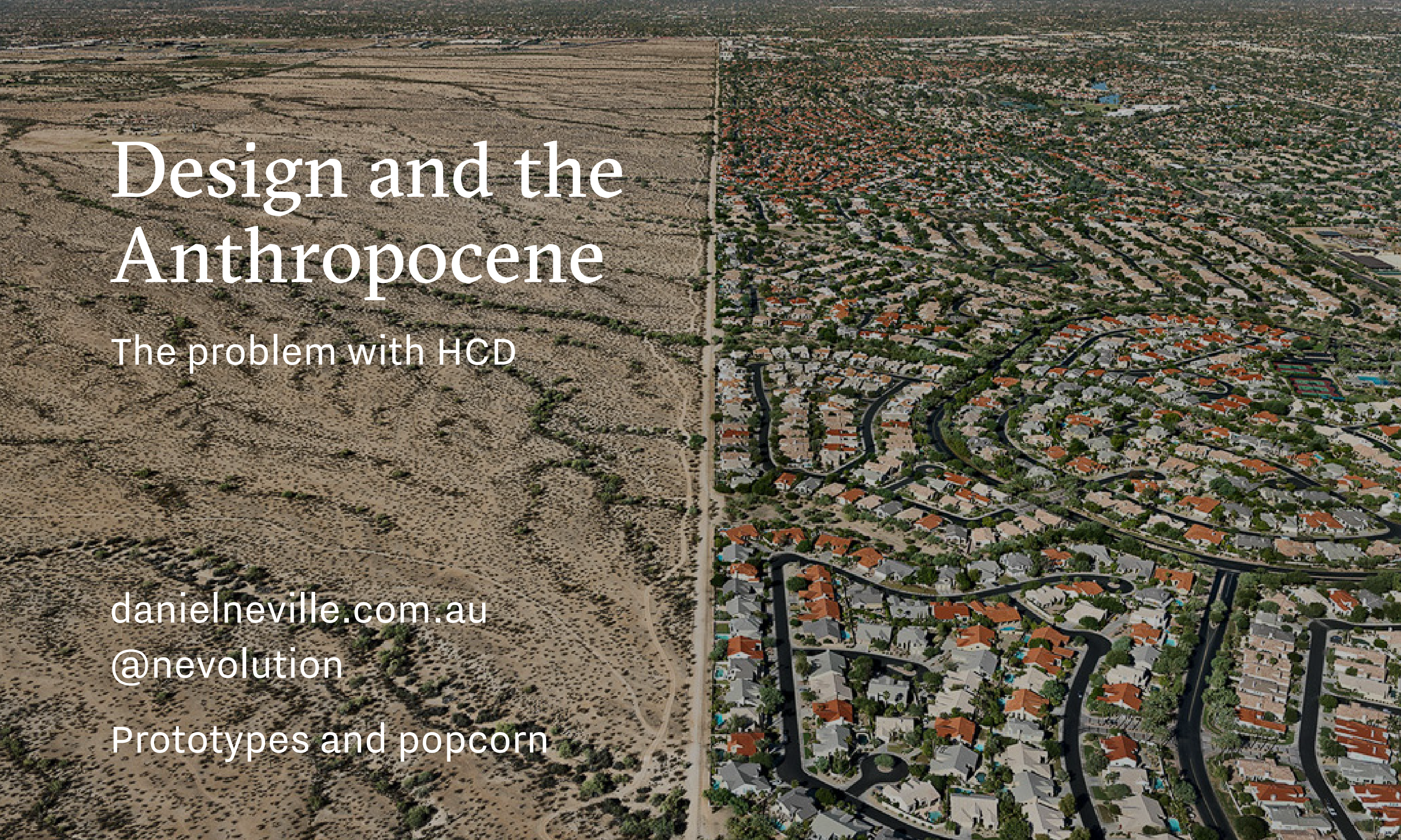


Design and the Anthropocene

The problem with HCD

danielneville.com.au
@nevolution

Prototypes and popcorn



Archean eon

4,000,000,000

2,500,000,000

Eoarchean

Paleoarchean

Mesoarchean

Neoarchean

Protoerozoic eon



2,500,000,000

541,000,000

Paleoproterozoic

Mesoproterozoic

Neoproterozoic

Phanerozoic eon



542,000,000

Now

Paleozoic

Mesozoic

Cenozoic

Cenozoic era

Paleocene
65,000,000

Anthropocene
1800+

Paleogene

Neogene

Quaternary



Sixty billion

An aerial photograph of a mountain range, likely the Sierra Nevada, with a river valley in the foreground. The foreground is filled with a patchwork of agricultural fields in various shades of green and brown. The mountains in the background are rugged and brown, with some snow patches. A river winds through the valley. The text 'The Two Cultures' is overlaid in the top left, 'CP Snow' in the top right, 'Sciences' in the bottom left, and 'Humanities' in the bottom right.

The Two Cultures

CP Snow

Sciences

Humanities

An aerial photograph of a landscape featuring a range of rugged, brown mountains in the center. To the left and right of the mountains are vast, flat agricultural fields divided into a grid of smaller plots, some green and some brown. A winding river or road is visible on the left side. The overall scene is a mix of natural and human-made environments.

Values

Nigel Cross

Sciences

Humanities

Design

Objectivity

Subjectivity

Practicality

Rationality

Imagination

Empathy

The truth

Justice

Appropriateness

An aerial photograph of a landscape featuring a range of rugged, brown mountains in the center. To the left and right of the mountains are vast, flat agricultural fields, some green and some brown, divided by a grid of roads and irrigation canals. A river or stream flows through the valley between the mountains. The overall scene is a mix of natural and human-made environments.

Appropriate methods

Sciences

Humanities

Design

Classification

Analogy

Modelling

Analysis

Metaphor

Synthesis

Experiment

Evaluation

Pattern-formation

An aerial photograph of a landscape. In the center, there are rugged, brown mountains. To the left, a wide, light-colored river flows through the landscape. The foreground and right side are dominated by a patchwork of agricultural fields in various shades of green, brown, and tan, separated by thin lines of roads or fences. The overall scene depicts a natural environment intersected by human-made agricultural patterns.

Phenomenon of study

Sciences

Humanities

Design

The Natural World

Human Experience

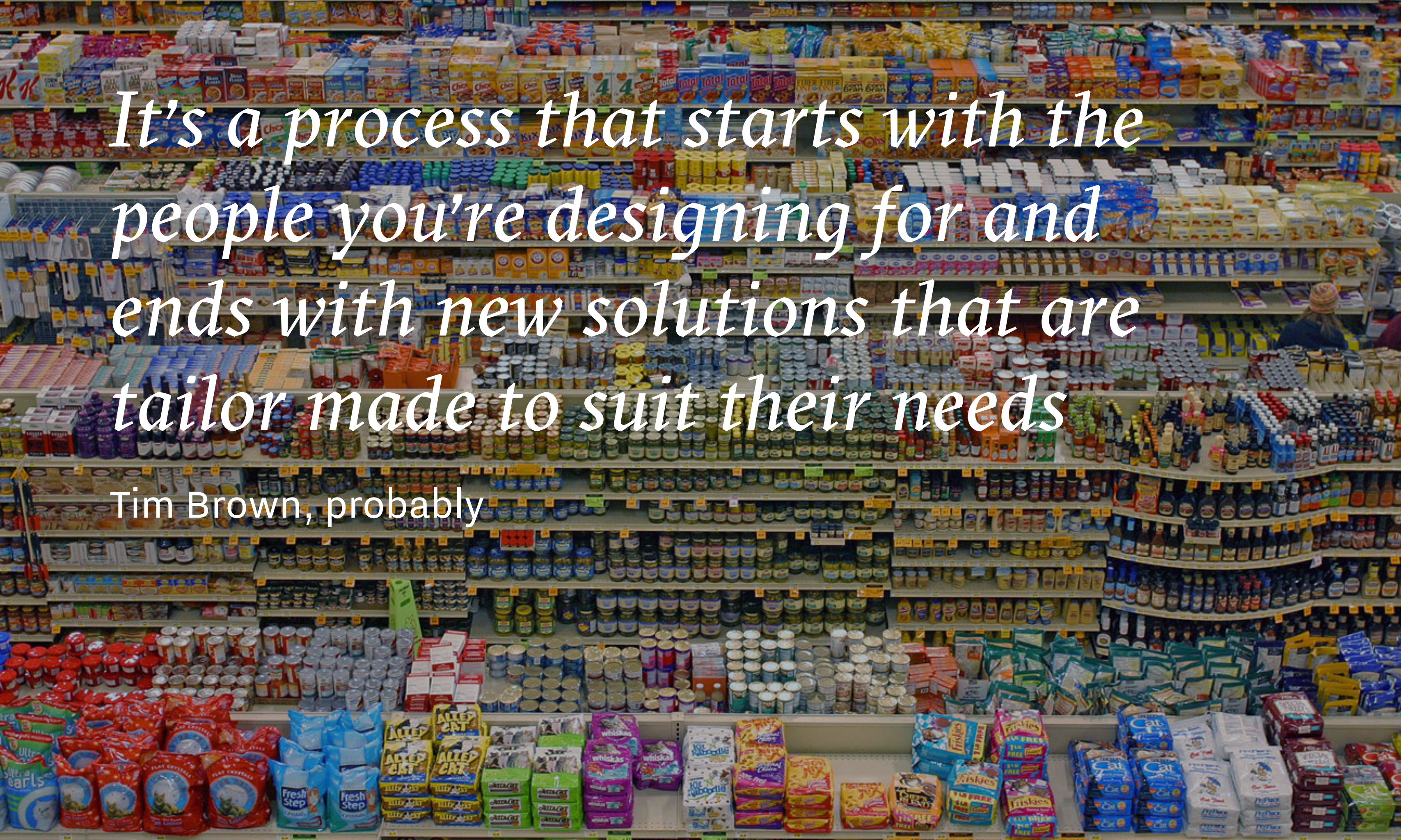
The Artificial World



Past

Future





It's a process that starts with the people you're designing for and ends with new solutions that are tailor made to suit their needs

Tim Brown, probably



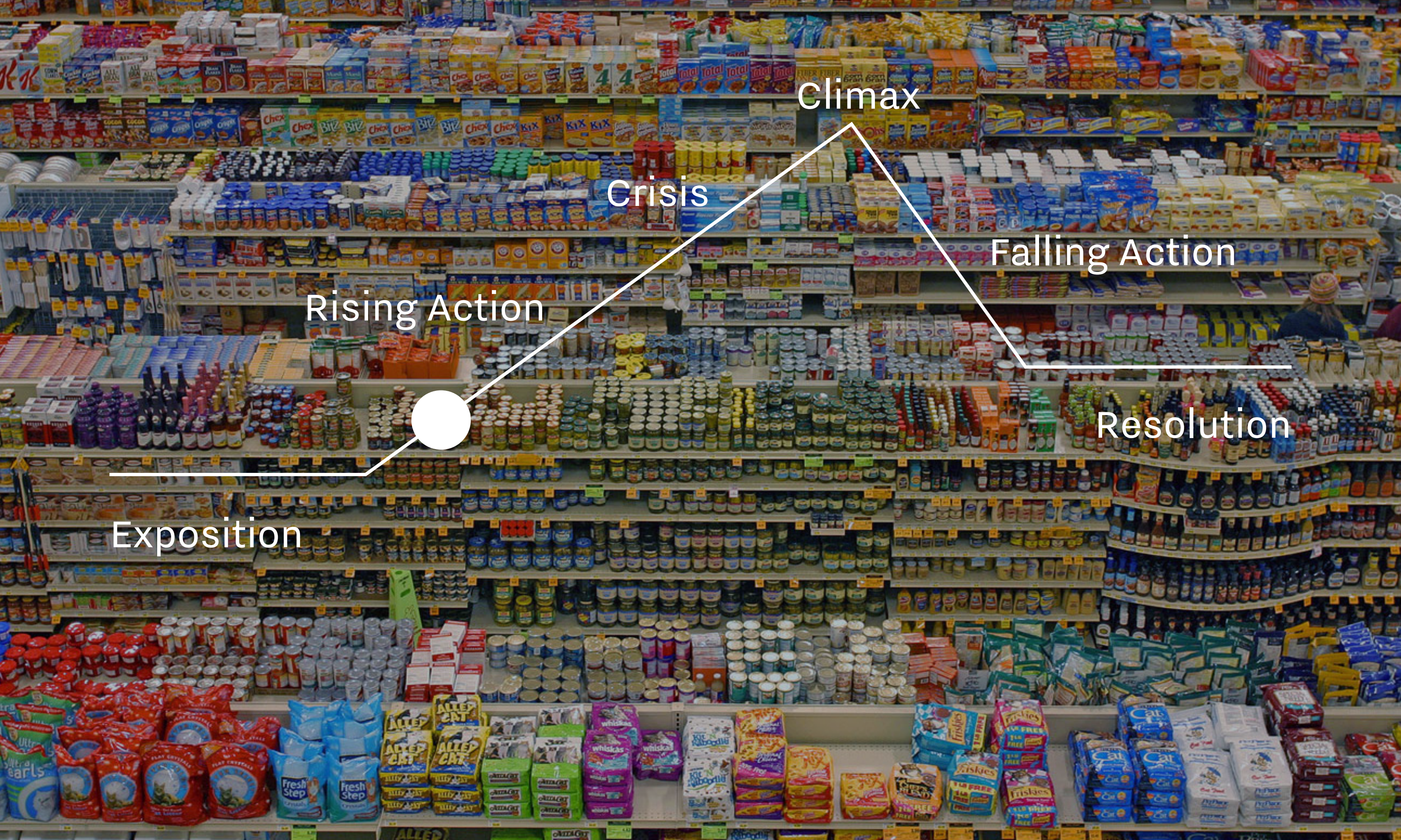
Environments & Systems

Services & Processes

Interactions & Products

Artefacts & Signs

Richard Buchanan



Climax

Crisis

Falling Action

Rising Action

Resolution

Exposition



Thomas Wendt



Thomas Wendt

An aerial photograph of a vast, flat, frozen landscape under a clear blue sky. A vibrant turquoise stream flows through the center of the frame. In the lower-left quadrant, a small, colorful, dome-shaped structure sits on the ice, surrounded by several red triangular markers. A large white circle is drawn around this area, with a smaller white dot at its center. The text 'Artificial World' is positioned above the circle, and 'The cold uncaring gaze of Nature' is to the right.

Artificial
World

The cold uncaring
gaze of Nature



Slow acting, concealed violence

Rob Nixon



Hyperobject

Viscosity

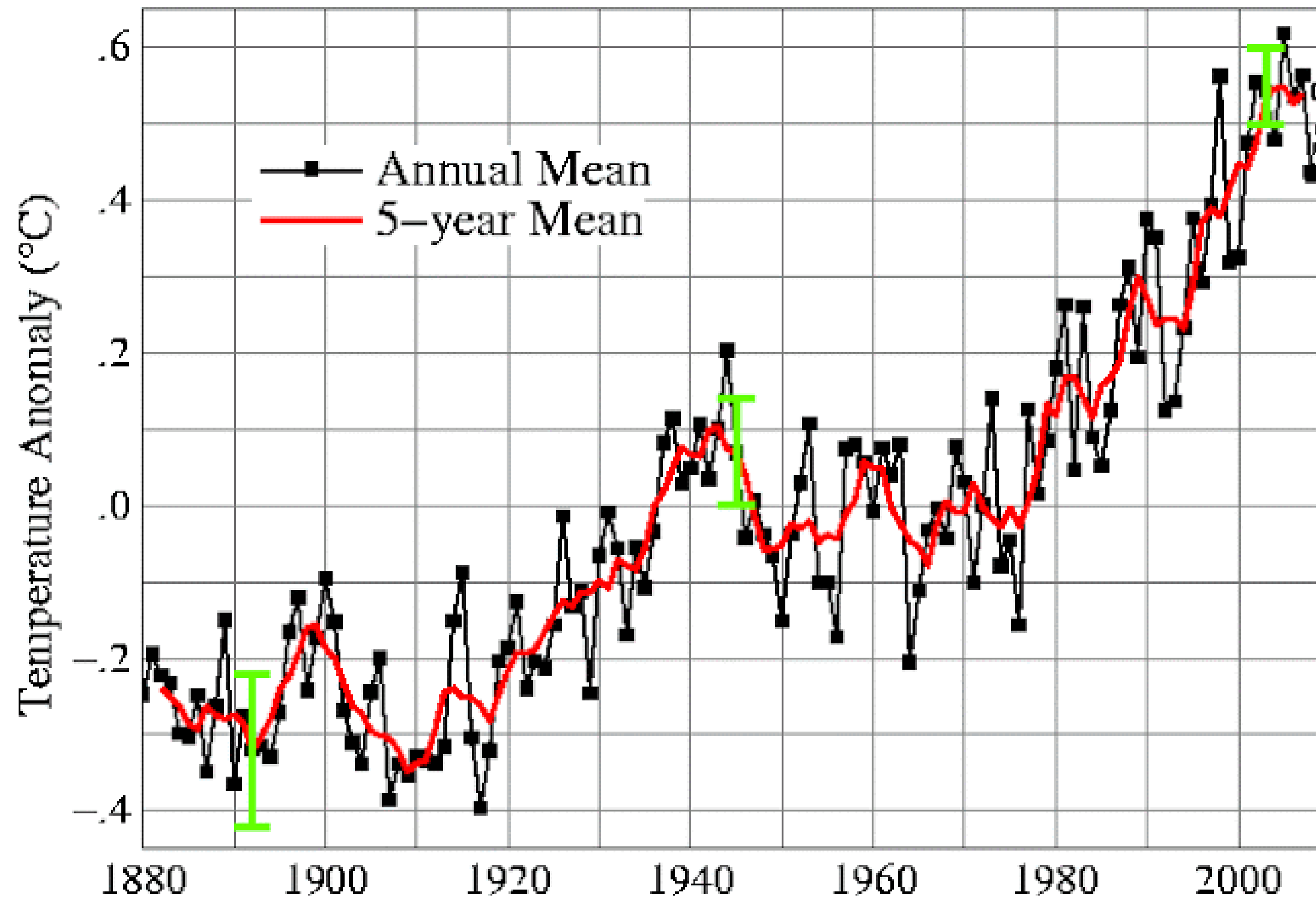
Nonlocality

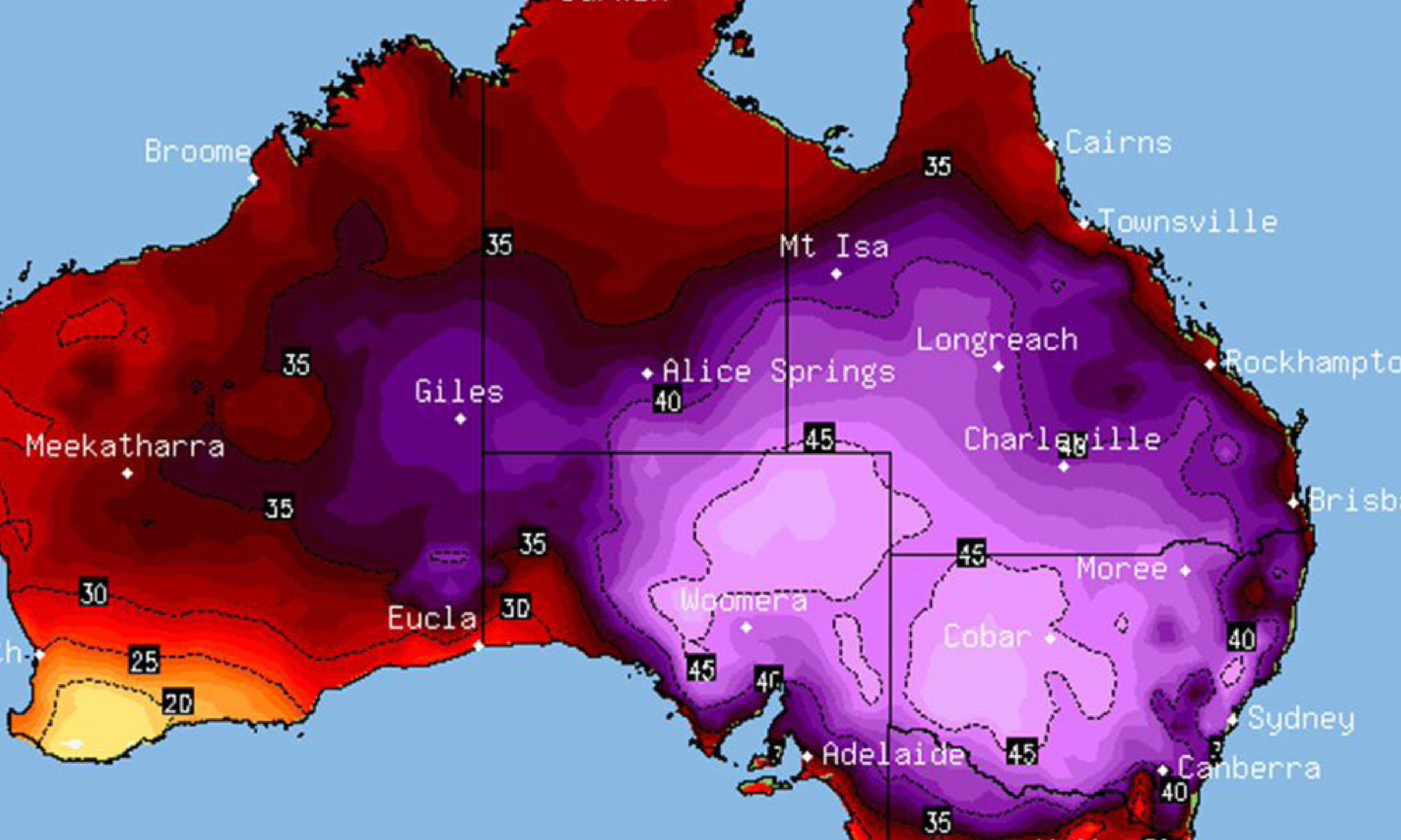
Temporal Undulation

Phasing

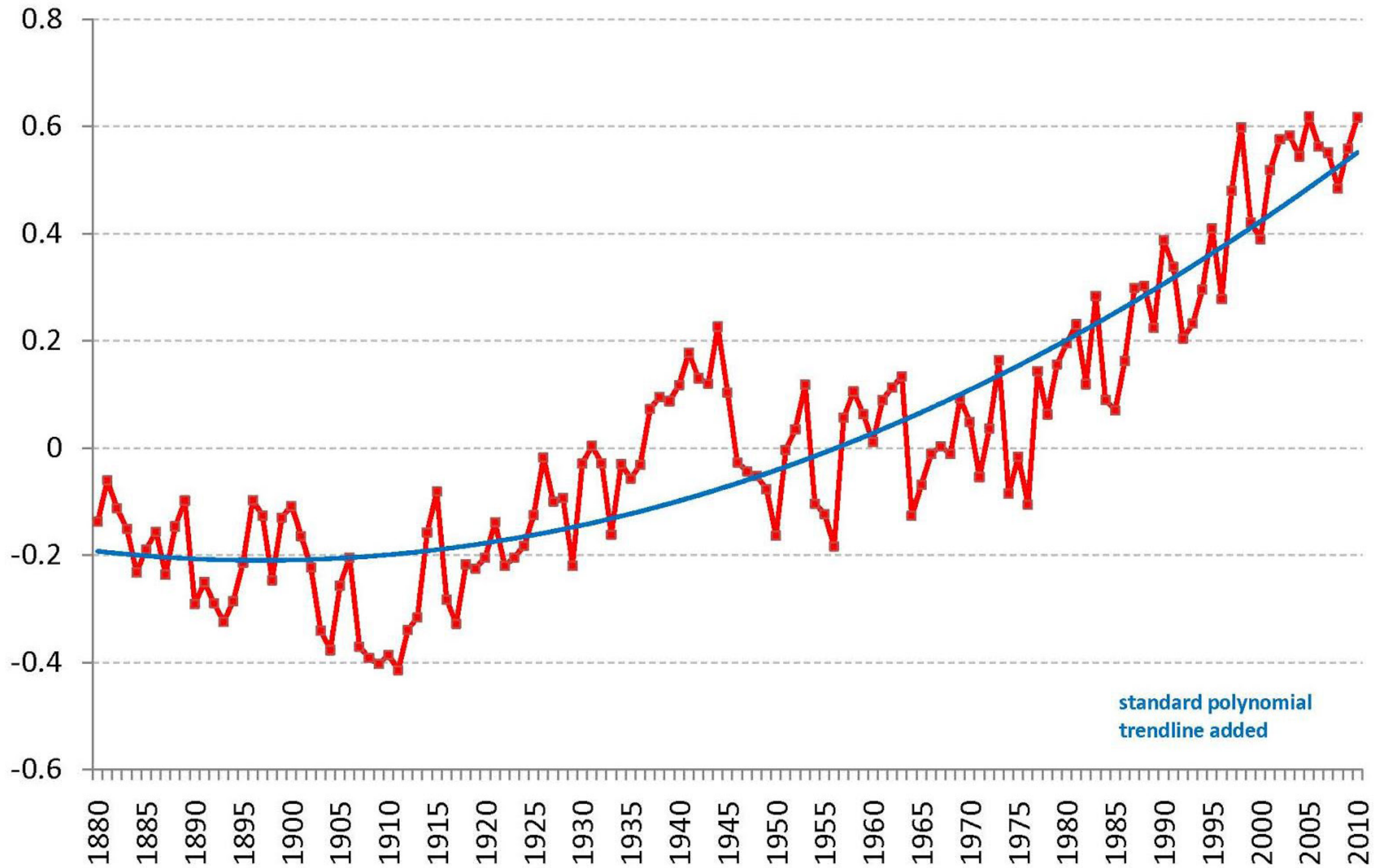
Interobjectivity

Global Land–Ocean Temperature Index

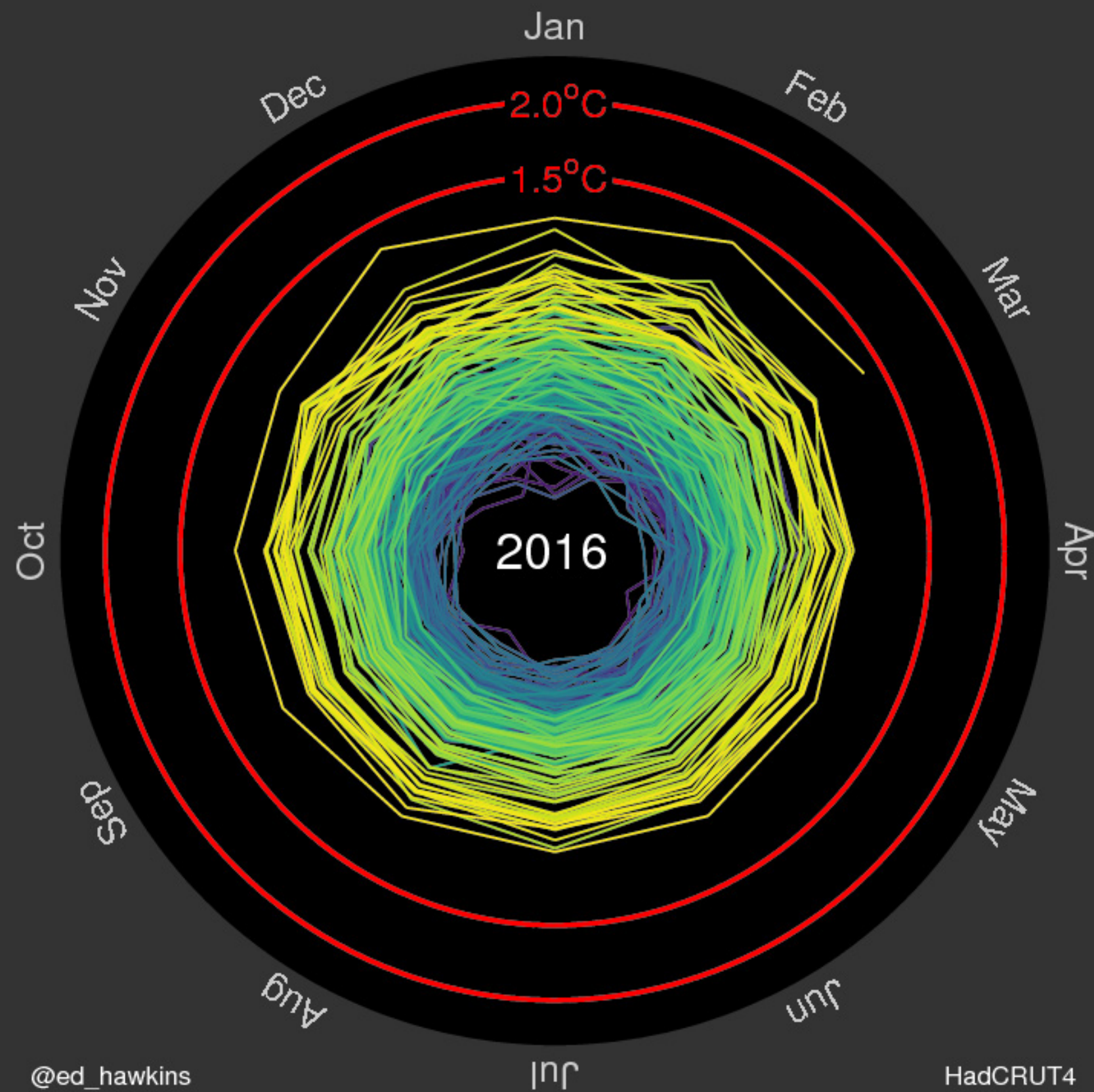




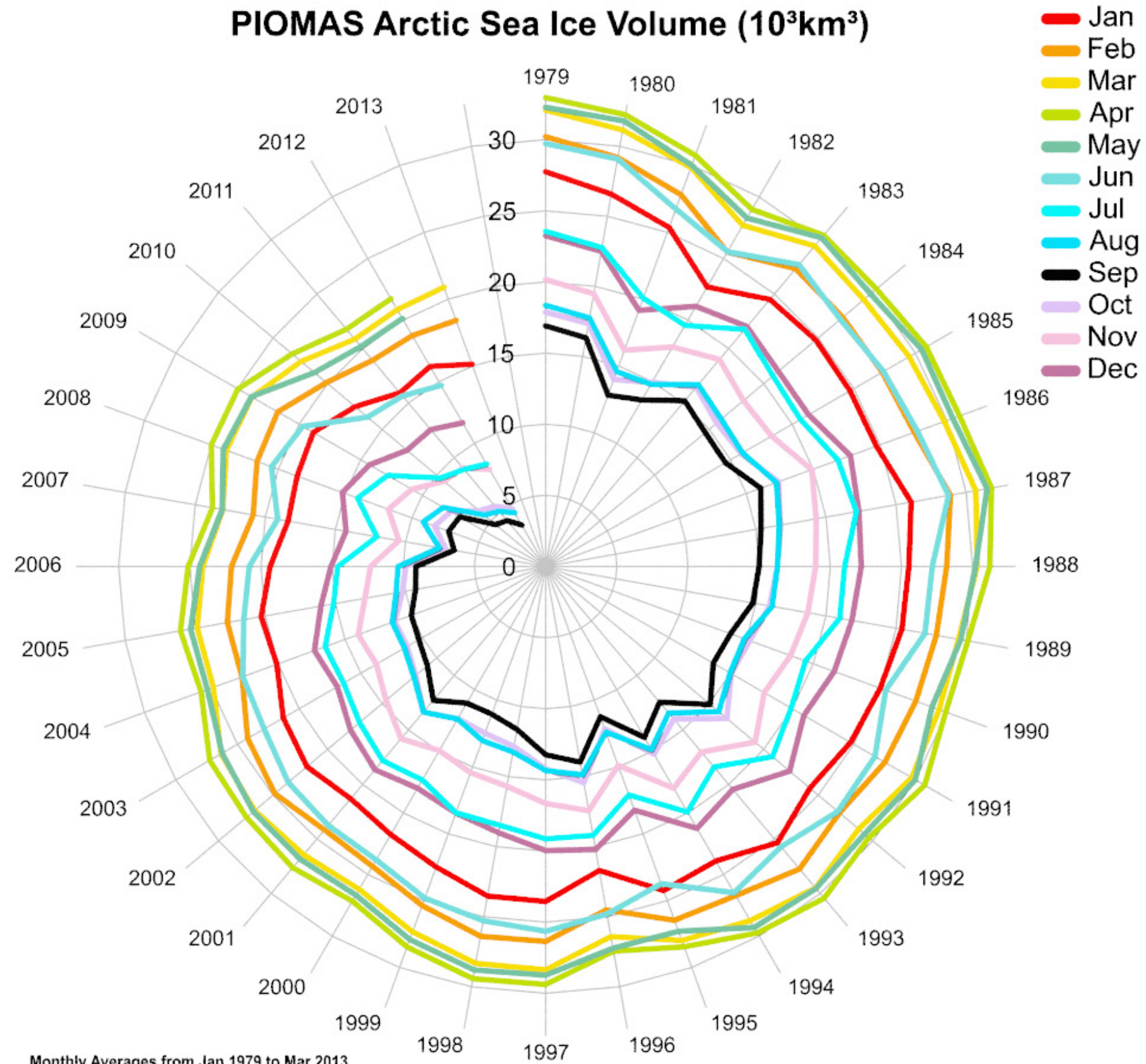
Global Temperature Changes from the 20th Century Average (degrees C)



Global temperature change (1850–2016)

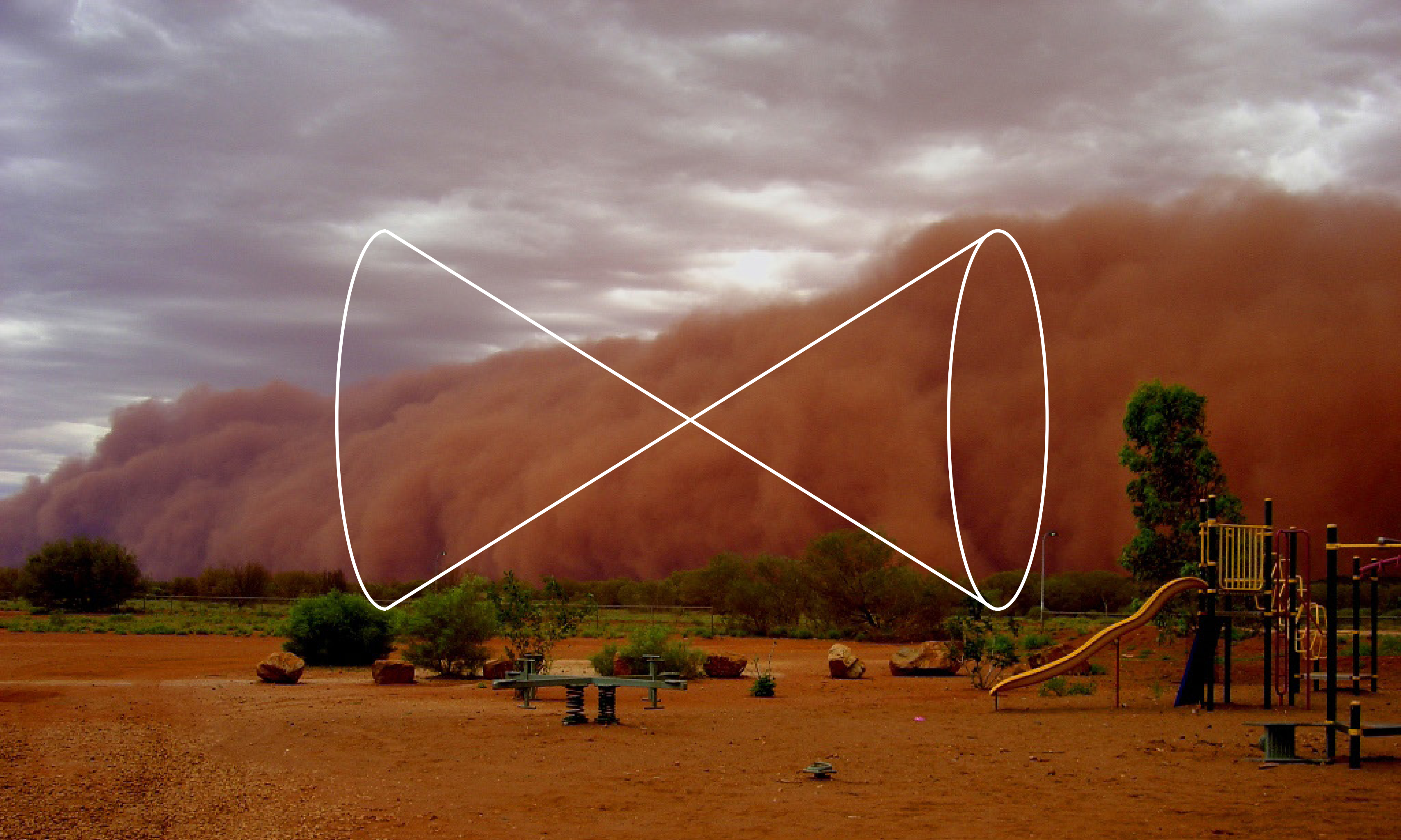


PIOMAS Arctic Sea Ice Volume (10^3km^3)



A photograph of a forest floor covered in a large pile of cut logs and branches, with a dense evergreen forest in the background. The foreground is a chaotic pile of light-colored wood, including many cross-sections of tree trunks and a dense network of thin, dry branches. The background is a thick forest of tall, dark green evergreen trees, their trunks appearing as a vertical screen. The lighting is somewhat dim, suggesting an overcast day or a deep forest setting.

personas



1

35

2017

34

69

2050





2017

+2.5C

2050



Possible

Plausible

Probable

Preferable

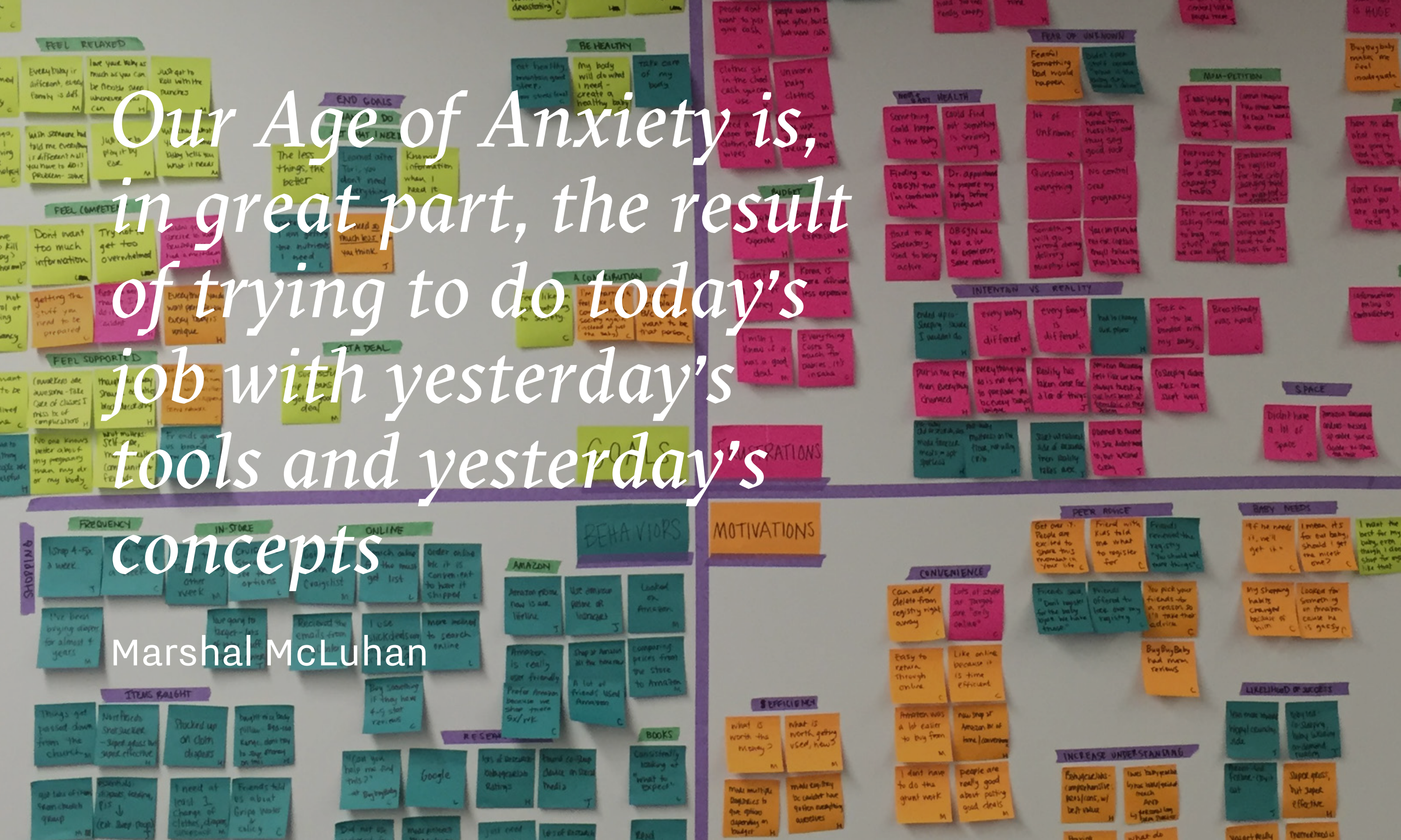
We shape our tools and afterwards our tools shape us

Marshall McLuhan



Our Age of Anxiety is, in great part, the result of trying to do today's job with yesterday's tools and yesterday's concepts

Marshall McLuhan





A consideration for the natural world

The ability to implement over long
time horizons and consider multiple
generations

An ability to understand and deal with
higher levels of complexity

Oliver Dykes



A consideration for the natural world

The ability to implement over long
time horizons and consider multiple
generations

An ability to understand and deal with
higher levels of complexity

Oliver Dykes

An aerial photograph of a desert landscape. In the foreground and middle ground, there are several large, circular agricultural fields, some of which are green and others are brown. A rectangular grid of roads and buildings is visible in the center. The background is a vast, flat, sandy desert.

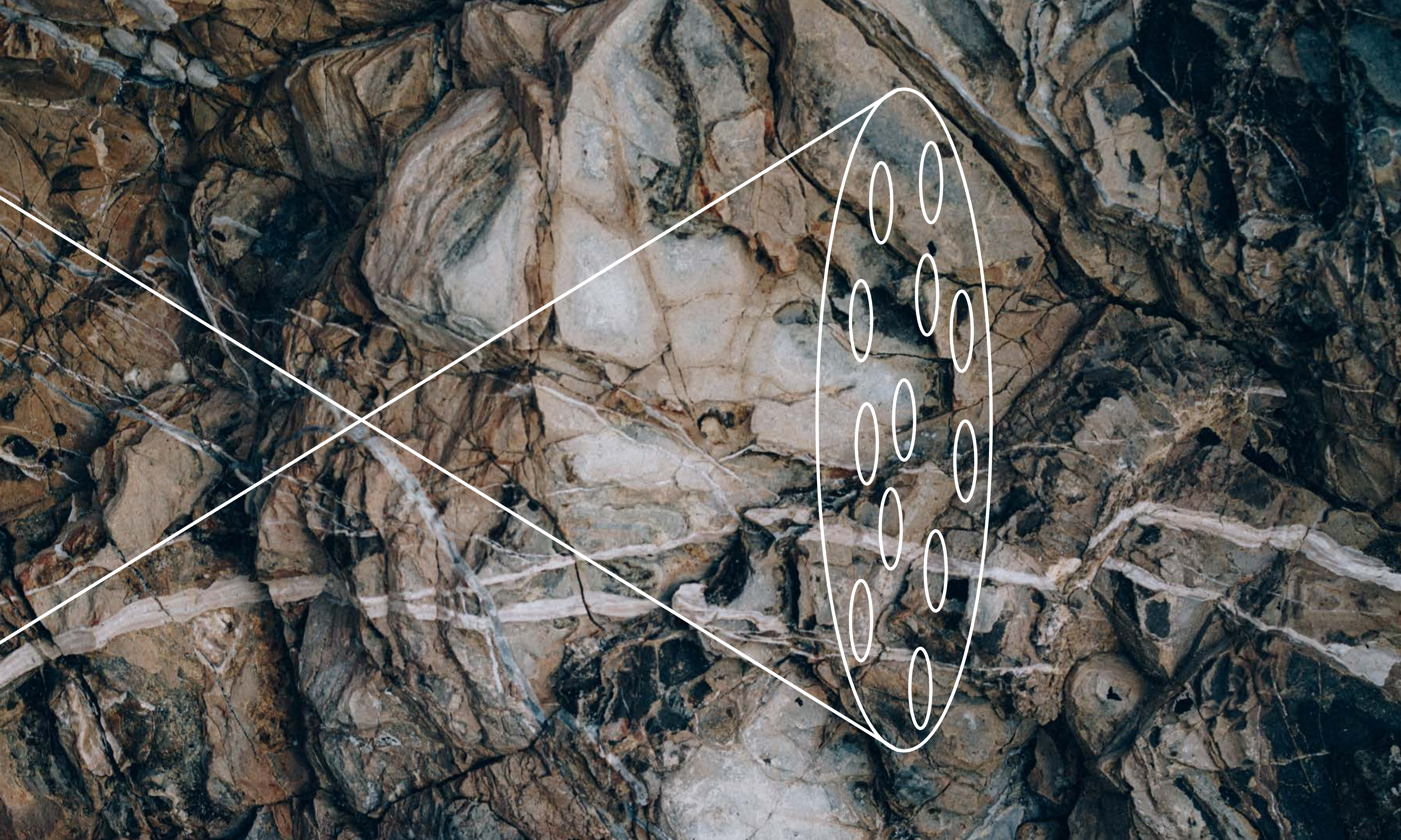
A consideration for the natural world

The ability to implement over long
time horizons and consider multiple
generations

An ability to understand and deal with
higher levels of complexity

Oliver Dykes





An aerial photograph showing a stark contrast between a natural desert environment on the left and a planned suburban housing development on the right. The desert is characterized by dry, brownish-yellow soil with sparse, low-lying green shrubs. A straight dirt road runs vertically between the two areas. The housing development on the right features a dense grid of houses with light-colored walls and prominent orange-tiled roofs. The streets are paved and winding, and the area is interspersed with green trees and lawns. The overall scene illustrates the impact of human development on a natural landscape.

Most of the photos by
Andreas Gursky
Edward Burtynsky
Superfamous Studios

danielneville.com.au
@nevolution
Prototypes and popcorn